

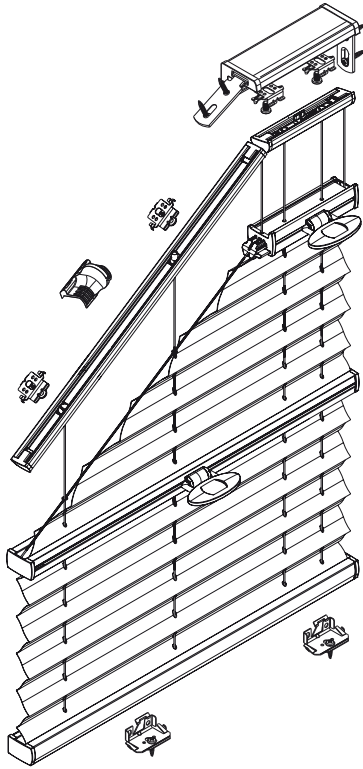
Installation TopFix / RecessFix [R1]



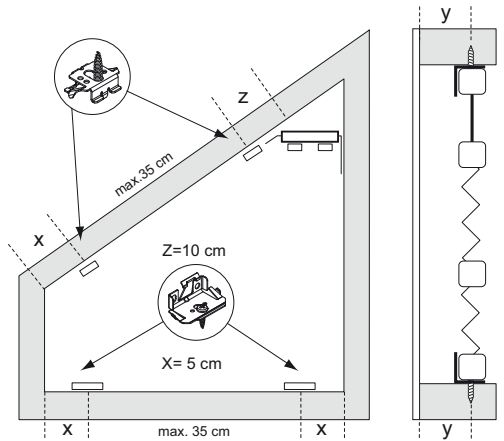
Model
2402/52
2412/62

- Do not damage the product when using a sharp knife to open the packaging! Fitting screws: Use a size-2 screwdriver (PO-ZIDRIVE) or use an electric screwdriver at it's lowest torque.
- Rail removal: Use a flat screwdriver of max. 6 mm wide. Only use the original screws enclosed, to prevent malfunctioning from using too thick screw heads!

Installation and User's manual PB - GB



Product width	Number of parts							
0 - 80 cm	3	var	2	1	var	var	2	4
81 - 115 cm	4	var	2	1	var	var	2	4
116 - 150 cm	5	var	2	1	var	var	2	4



Clip installation (high rail)

1

Profile installation

2

Clip installation (bottom rail)

3

Installation sequence

4
Note: if necessary, before clicking the rail into place, slacken the steel wire. After clicking, place cover on the bottom clips.

Rail installation sequence on Clips

4-A1

4-A2

4-B/C1

4-B/C2

Operation

6

Removal

Tensioning/slackening the steel wire

5
Push firmly to the right/left to tension/slacken the steel wire

21-03-2014

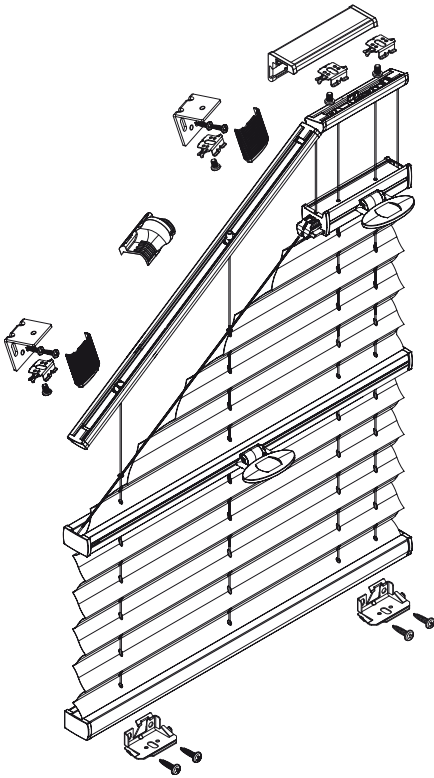
FaceFix installation to a window frame / wall [F1]



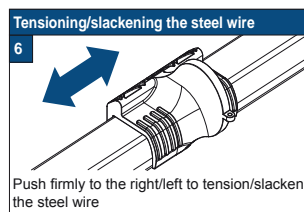
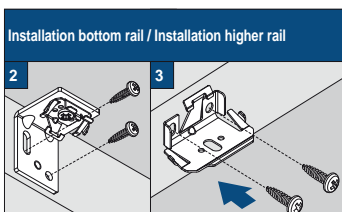
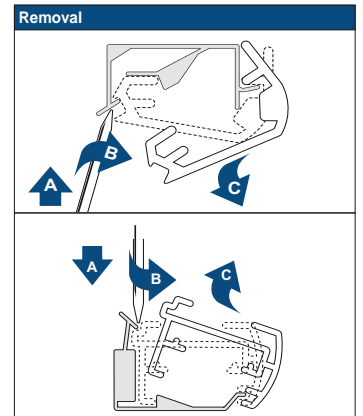
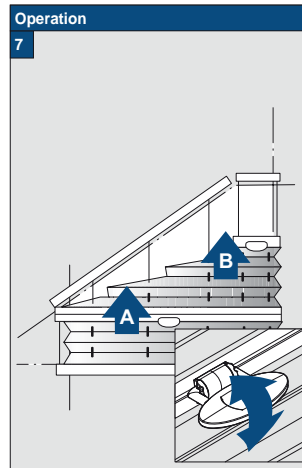
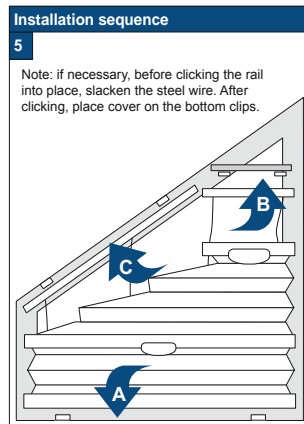
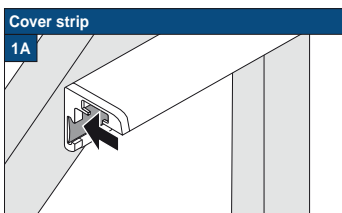
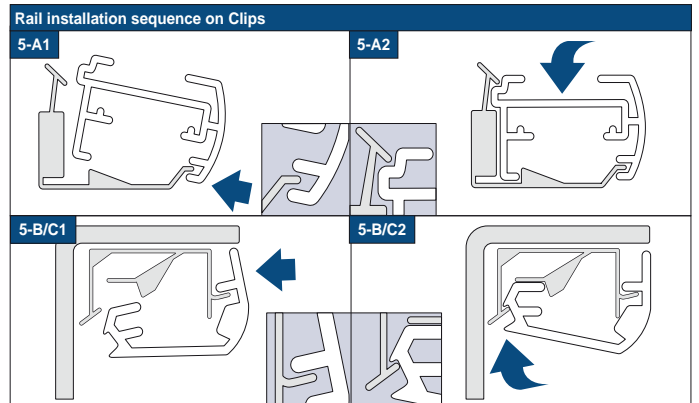
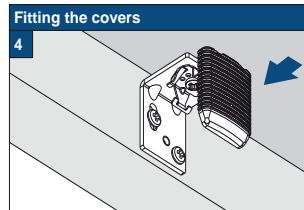
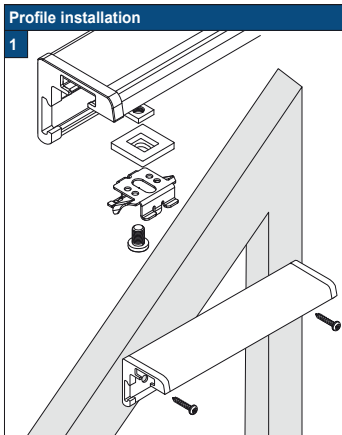
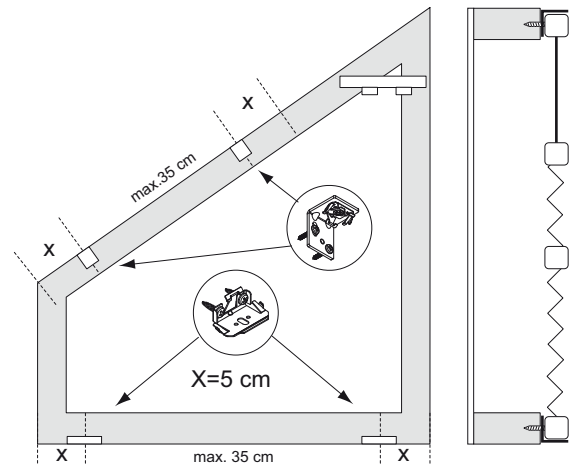
Model
2402/52
2412/62

- ! Do not damage the product when using a sharp knife to open the packaging! Fitting screws: Use a size-2 screwdriver (PO-ZIDRIVE) or use an electric screwdriver at it's lowest torque.
- Rail removal: Use a flat screwdriver of max. 6 mm wide. Only

use the original screws enclosed, to prevent malfunctioning from using too thick screw heads!



Product width	Number of parts								
0 - 80 cm	3	var	var	var	1	var	var	var	2
81 - 115 cm	4	var	var	var	1	var	var	var	2
116 - 150 cm	5	var	var	var	1	var	var	var	2



Installation TopFix / RecessFix [R1]

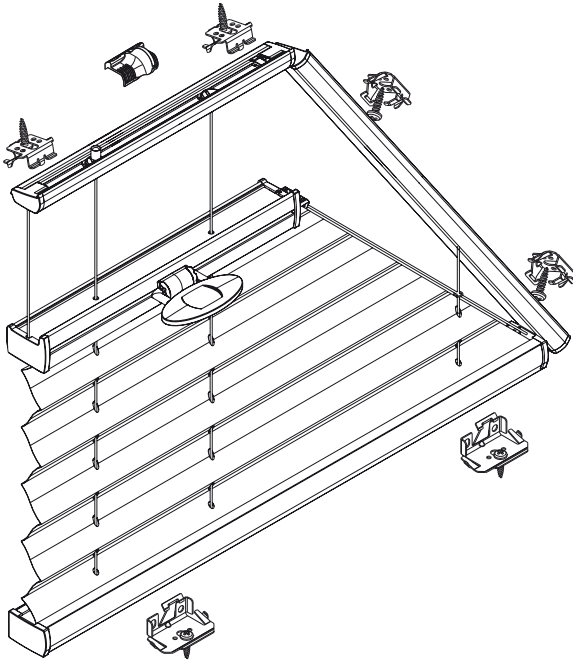


Model
2602/52
2612/62

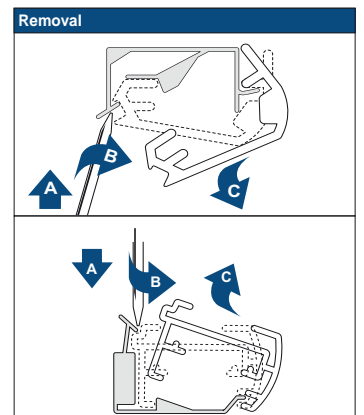
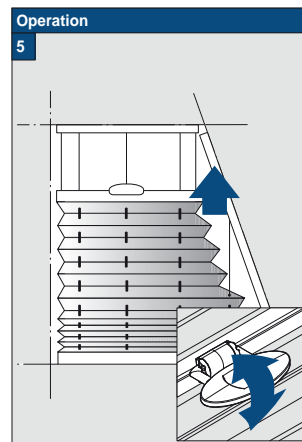
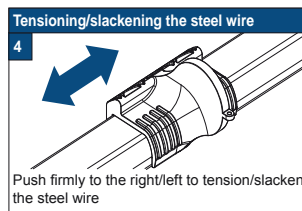
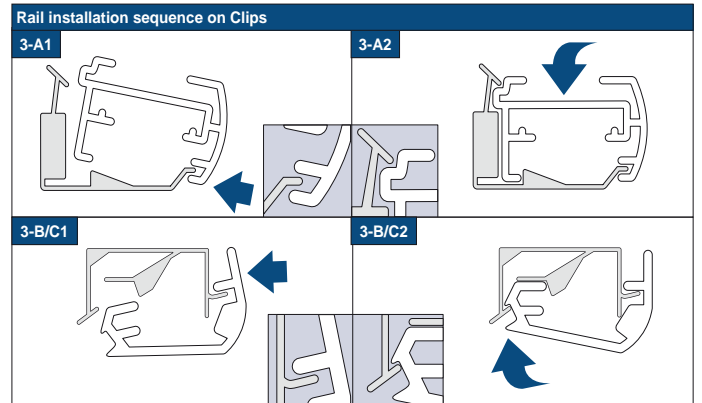
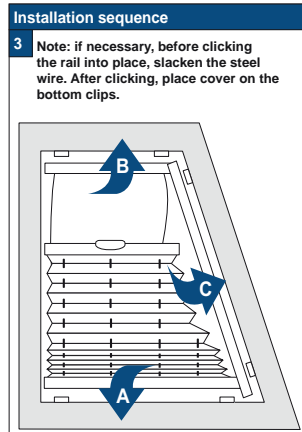
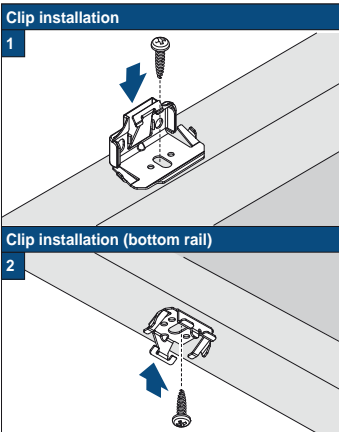
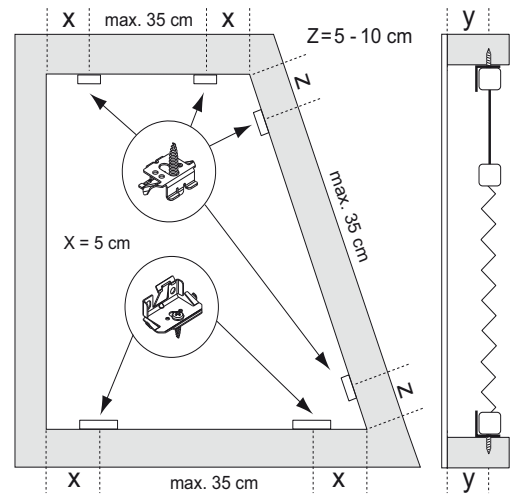
Do not damage the product when using a sharp knife to open the packaging! Fitting screws: Use a size-2 screwdriver (PO-ZIDRIVE) or use an electric screwdriver at it's lowest torque.
● Rail removal: Use a flat screwdriver of max. 6 mm wide. Only

use the original screws enclosed, to prevent malfunctioning from using too thick screw heads!

Installation and User's manual PB - GB



Product width	Number of parts			
0 - 80 cm	3	var	1	var
81 - 115 cm	4	var	1	var
116 - 150 cm	5	var	1	var



21-03-2014

FaceFix installation to a window frame / wall [F1]

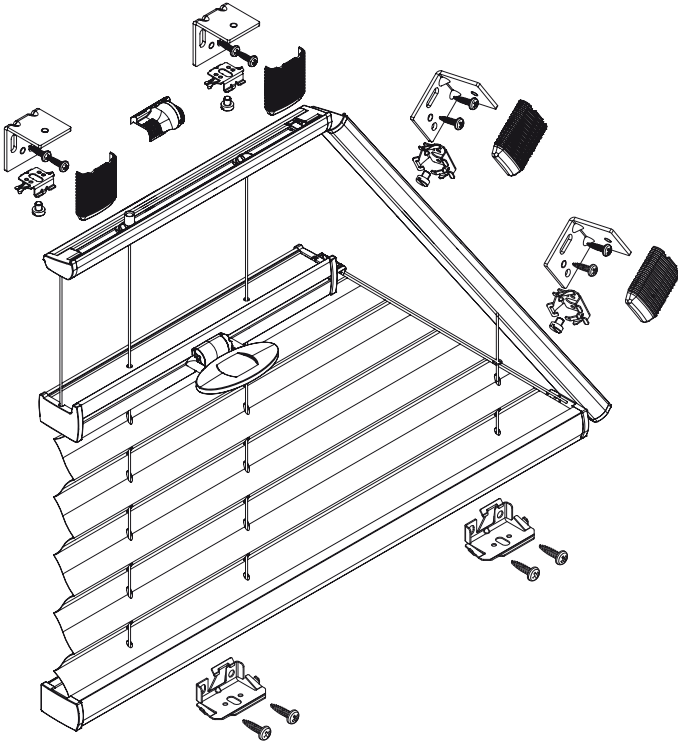


Model
2602/52
2612/62

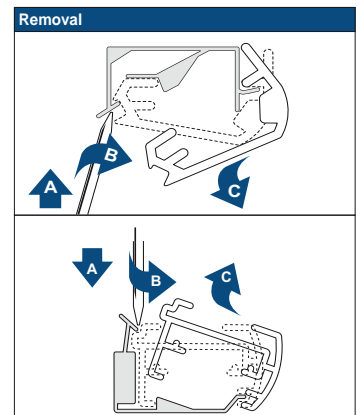
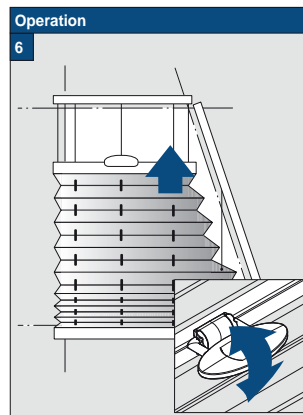
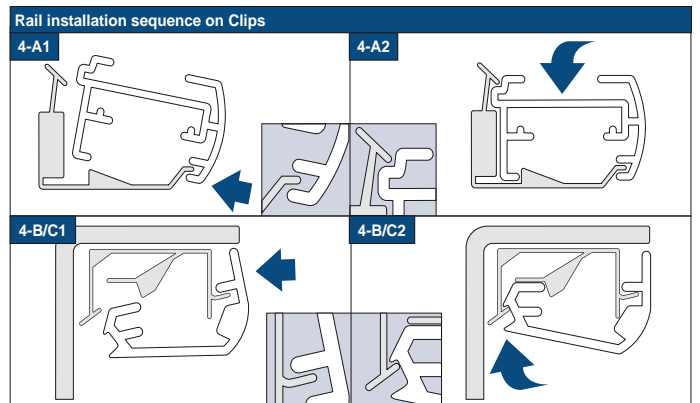
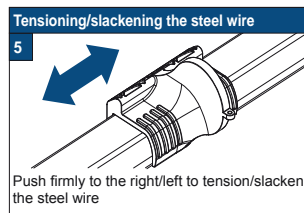
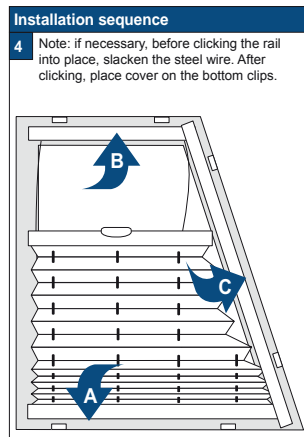
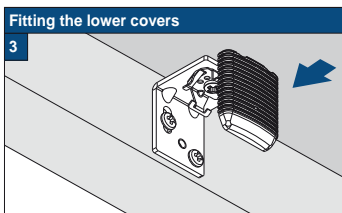
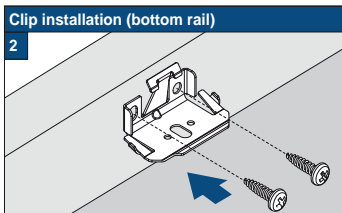
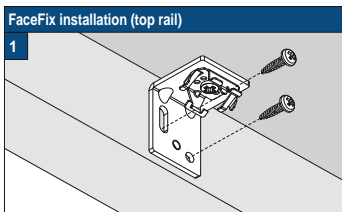
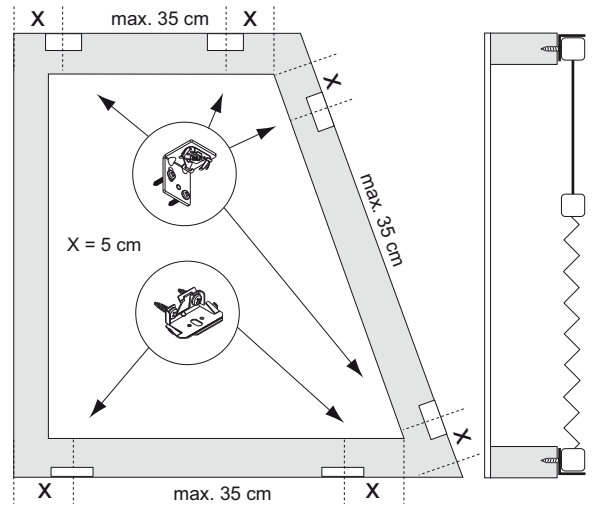
Do not damage the product when using a sharp knife to open the packaging! Fitting screws: Use a size-2 screwdriver (PO-ZIDRIVE) or use an electric screwdriver at it's lowest torque.
● Rail removal: Use a flat screwdriver of max. 6 mm wide. Only

use the original screws enclosed, to prevent malfunctioning from using too thick screw heads!

Installation and User's manual PB - GB



Product width	Number of parts						
0 - 80 cm	3	var	var	var	1	var	var
81 - 115 cm	4	var	var	var	1	var	var
116 - 150 cm	5	var	var	var	1	var	var



21-03-2014

Installation TopFix / RecessFix [R1]

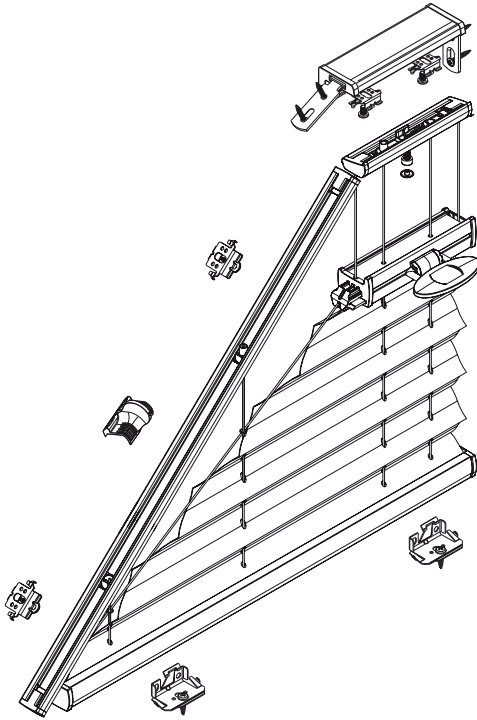


Model
2702/52
2712/62

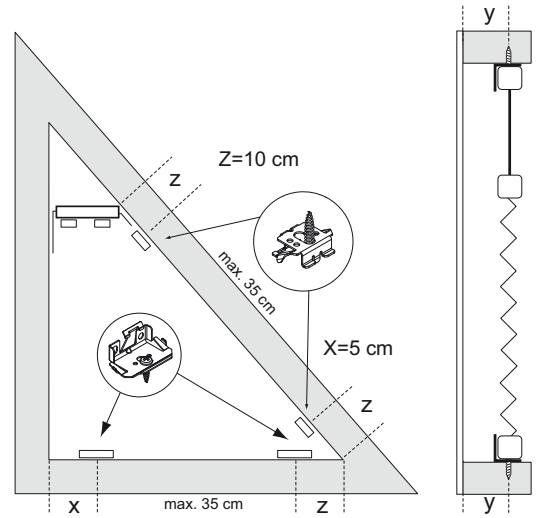
! Do not damage the product when using a sharp knife to open the packaging! Fitting screws: Use a size-2 screwdriver (PO-ZIDRIVE) or use an electric screwdriver at it's lowest torque.
● Rail removal: Use a flat screwdriver of max. 6 mm wide. Only

use the original screws enclosed, to prevent malfunctioning from using too thick screw heads!

Installation and User's manual PB - GB



Product width	Number of parts							
0 - 80 cm	2	var	2	1	2	var	var	4
81 - 115 cm	3	var	2	1	2	var	var	4
116 - 150 cm	4	var	2	1	2	var	var	4



Clip installation (high rail)
1

Profile installation
2

The adjustable SideBrackets can be bend* to the actual incline.

Clip installation (bottom rail)
3

Installation sequence
4

Note: if necessary, before clicking the rail into place, slacken the steel wire. After clicking, place cover on the bottom clips.

Rail installation sequence on Clips

4-A1, 4-A2, 4-B/C1, 4-B/C2

Tensioning/slackening the steel wire
5

Push firmly to the right/left to tension/slacken the steel wire

Operation
6

Removal

21-03-2014

FaceFix installation to a window frame / wall [F1]

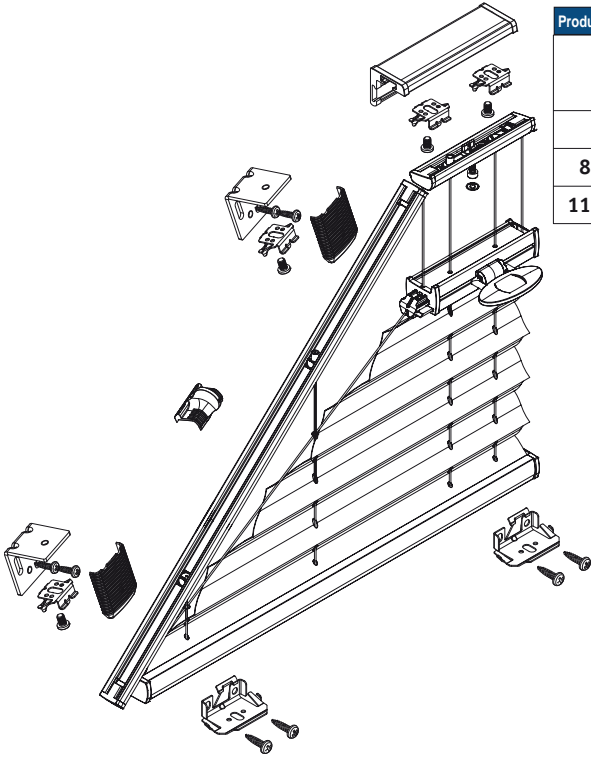


Model
2702/52
2712/62

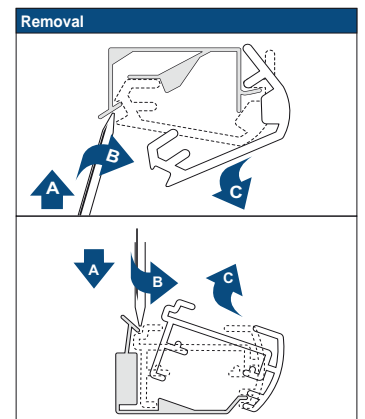
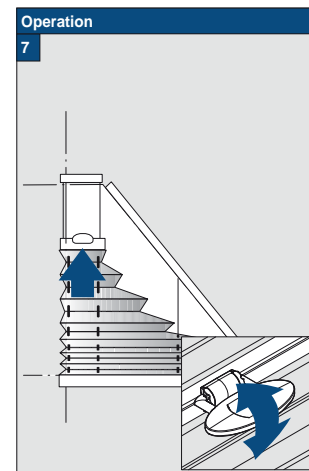
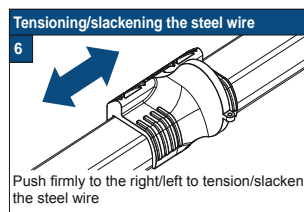
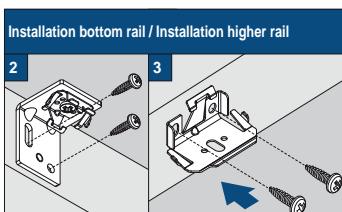
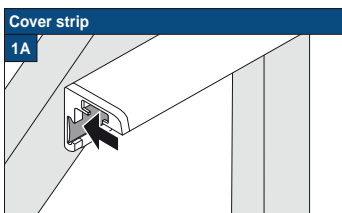
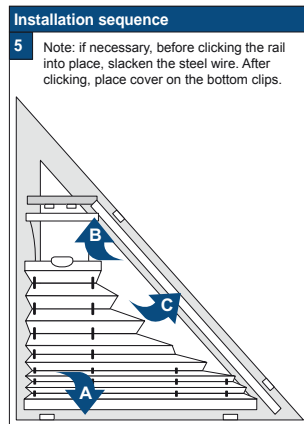
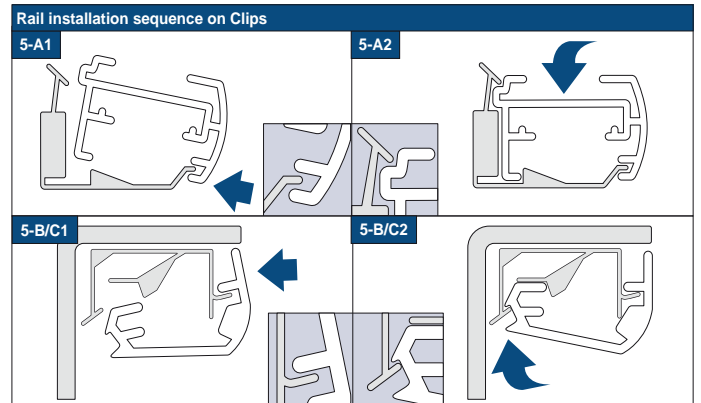
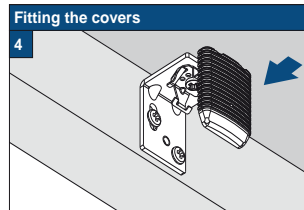
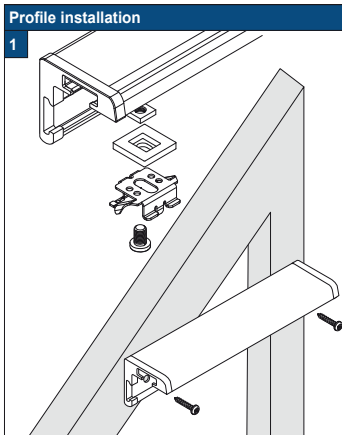
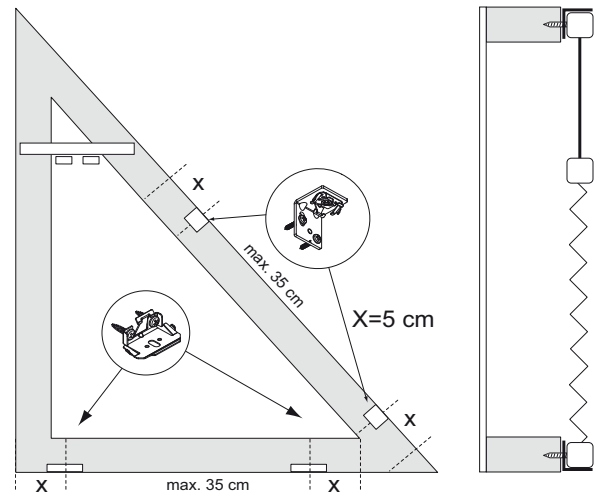
! Do not damage the product when using a sharp knife to open the packaging! Fitting screws: Use a size-2 screwdriver (PO-ZIDRIVE) or use an electric screwdriver at it's lowest torque.
● Rail removal: Use a flat screwdriver of max. 6 mm wide. Only

use the original screws enclosed, to prevent malfunctioning from using too thick screw heads!

Installation and User's manual PB - GB



Product width	Number of parts								
0 - 80 cm	3	var	var	var	1	2	2	var	var
81 - 115 cm	4	var	var	var	1	2	2	var	var
116 - 150 cm	5	var	var	var	1	2	2	var	var



21-03-2014

Installation TopFix / RecessFix [R1]

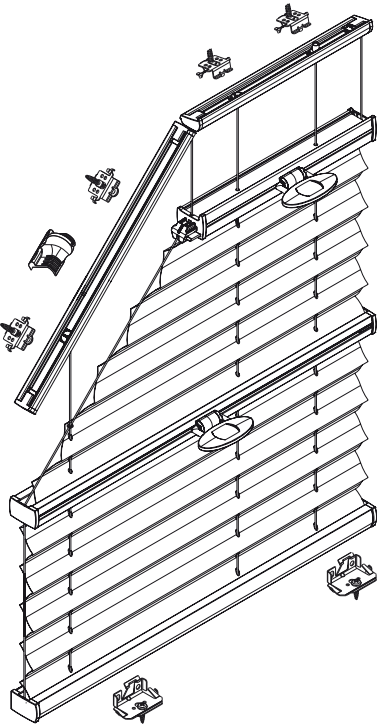


Model
2802/52
2812/62

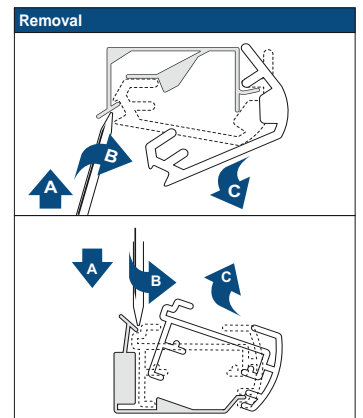
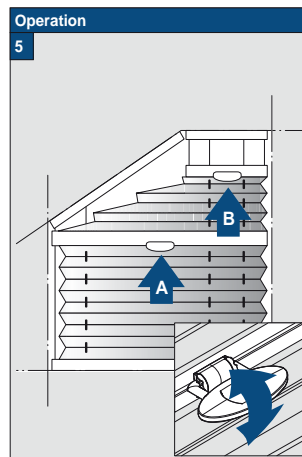
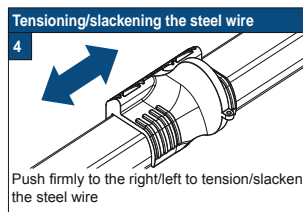
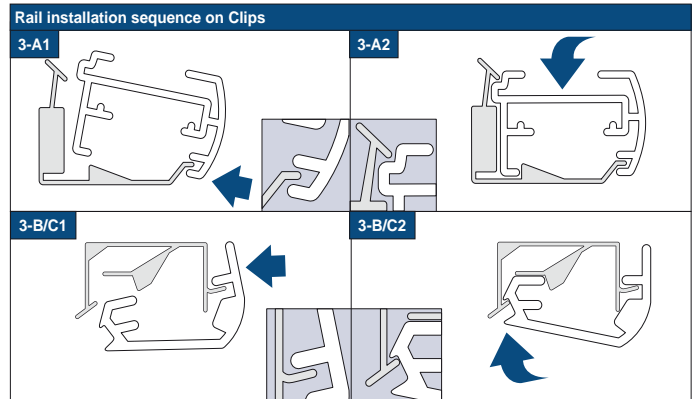
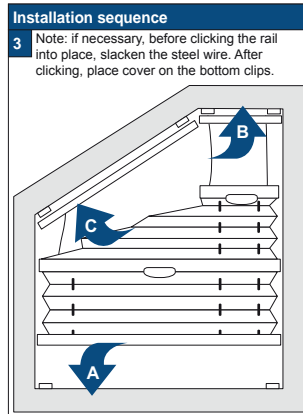
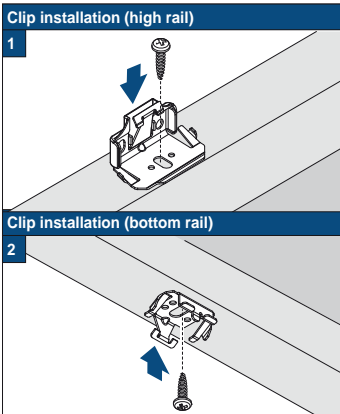
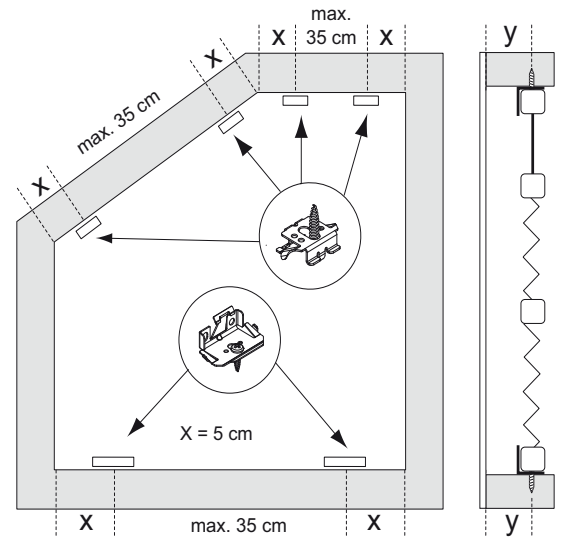
Do not damage the product when using a sharp knife to open the packaging! Fitting screws: Use a size-2 screwdriver (PO-ZIDRIVE) or use an electric screwdriver at it's lowest torque.
Rail removal: Use a flat screwdriver of max. 6 mm wide. Only

use the original screws enclosed, to prevent malfunctioning from using too thick screw heads!

Installation and User's manual PB - GB



Product width	Number of parts			
0 - 80 cm	3	var	1	var
81 - 115 cm	4	var	1	var
116 - 150 cm	5	var	1	var



21-03-2014

FaceFix installation to a window frame / wall [F1]

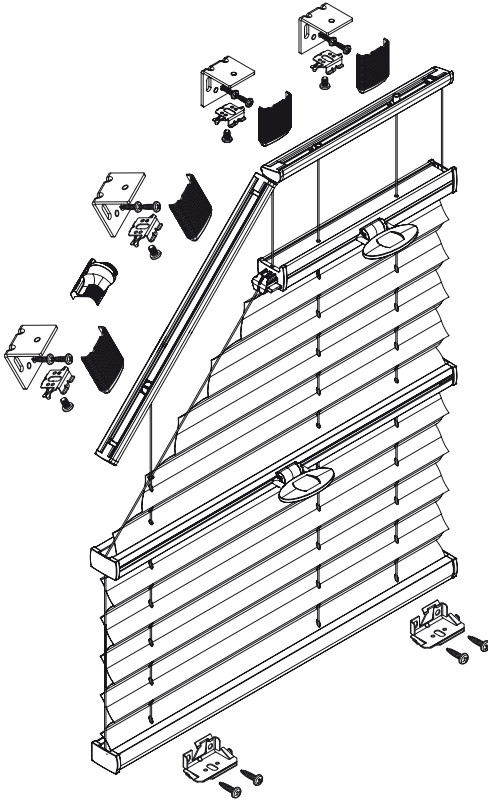
Luxaflex

Model
2802/52
2812/62

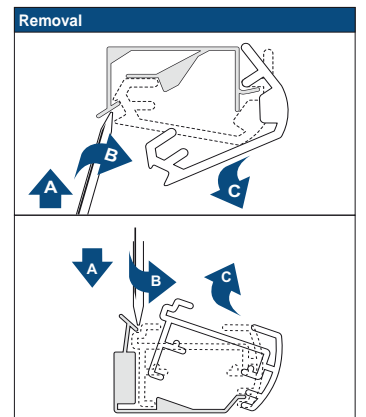
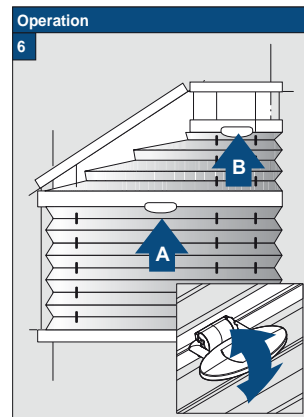
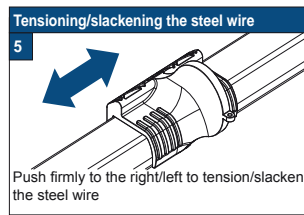
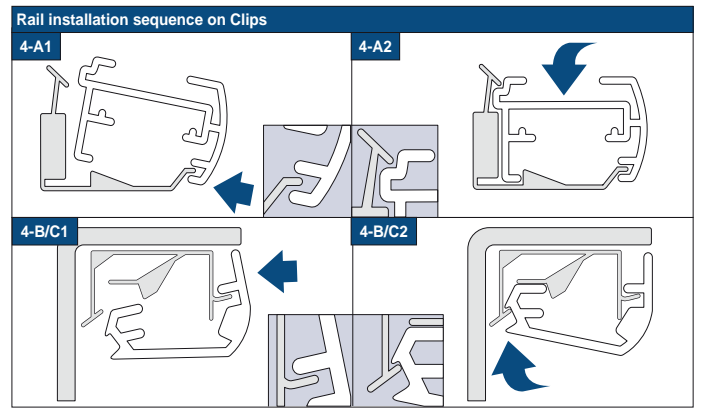
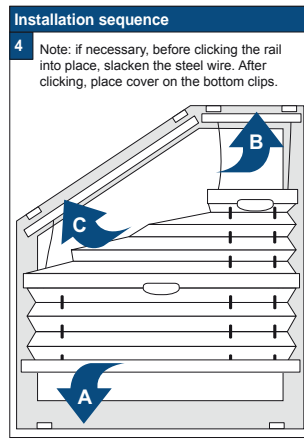
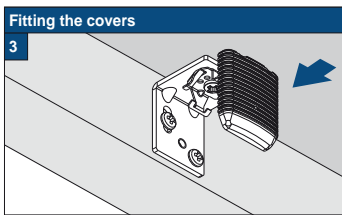
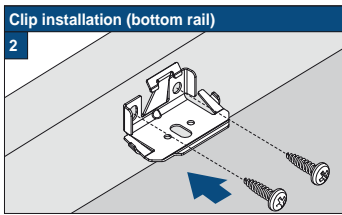
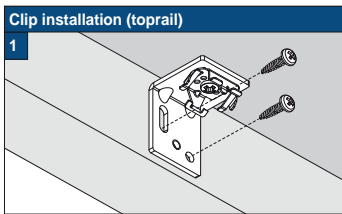
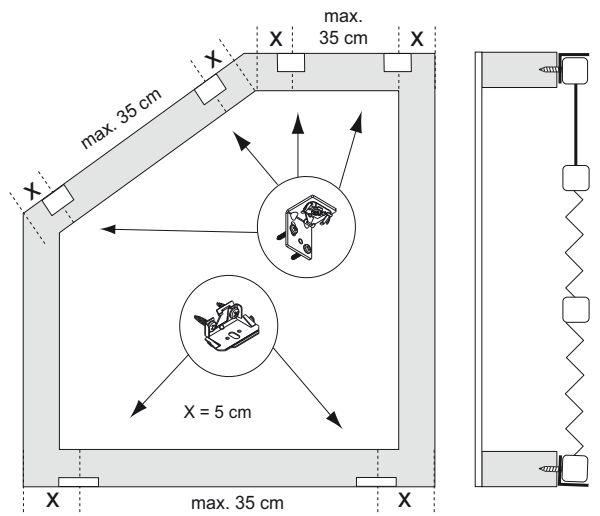
- ! Do not damage the product when using a sharp knife to open the packaging! Fitting screws: Use a size-2 screwdriver (PO-ZIDRIVE) or use an electric screwdriver at it's lowest torque.
- Rail removal: Use a flat screwdriver of max. 6 mm wide. Only

use the original screws enclosed, to prevent malfunctioning from using too thick screw heads!

Installation and User's manual PB - GB



Product width	Number of parts						
0 - 80 cm	3	var	var	var	1	var	var
81 - 115 cm	4	var	var	var	1	var	var
116 - 150 cm	5	var	var	var	1	var	var



21-03-2014

Installation TopFix / RecessFix [R1]

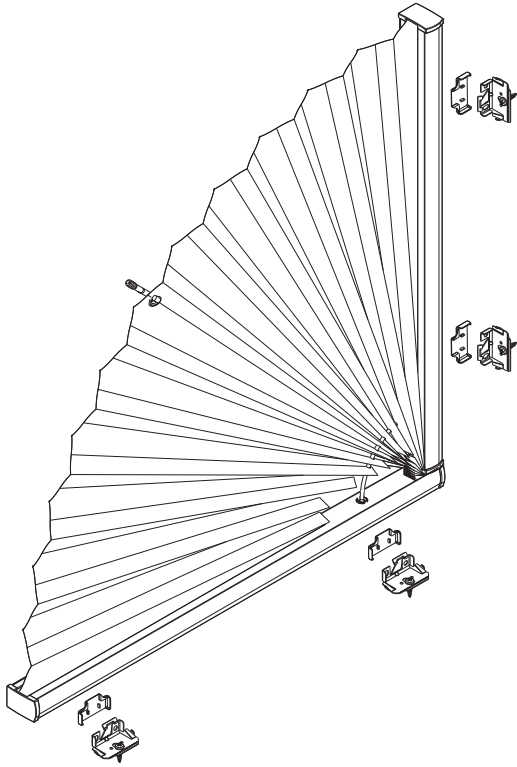


Model
3507/57
3517/67

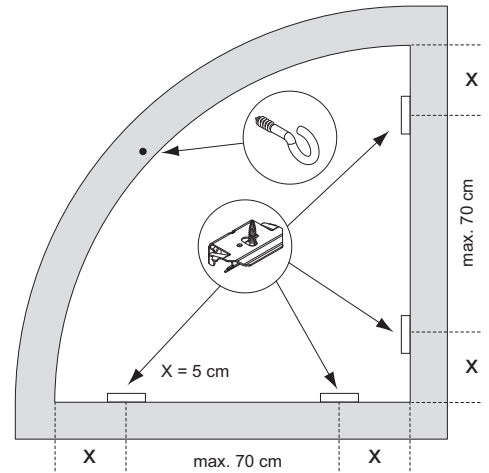
- ! Do not damage the product when using a sharp knife to open the packaging! Fitting screws: Use a size-2 screwdriver (PO-ZIDRIVE) or use an electric screwdriver at it's lowest torque.
- Rail removal: Use a flat screwdriver of max. 6 mm wide. Only

use the original screws enclosed, to prevent malfunctioning from using too thick screw heads!

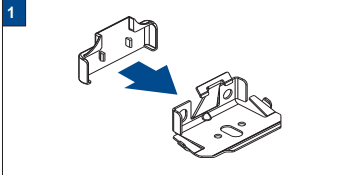
Installation and User's manual PB - GB



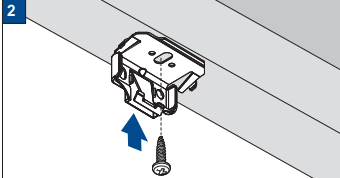
Product width	Number of parts			
0 - 80 cm	4	4	var	4
81 - 120 cm	6	6	var	6



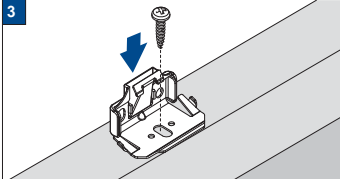
Cover installation



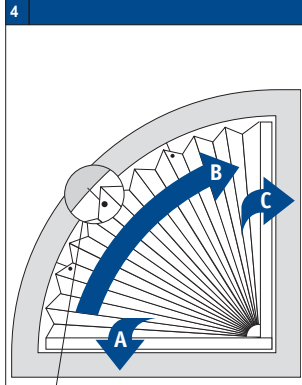
Clip installation (toprail)



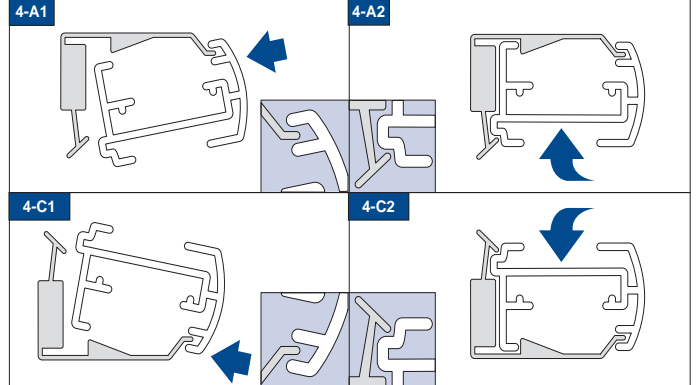
Clip installation (bottom rail)



Rail installation sequence on Clips



Rail installation sequence on Clips

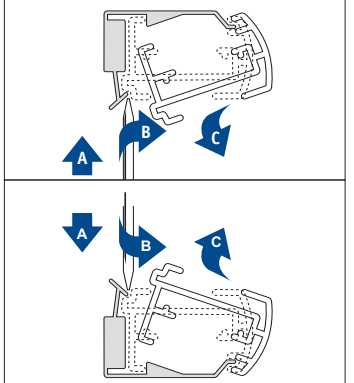


Positioning the fastening hook(s)

5

- ! - Click the pleated blind into place with the lower rail and unfold it all the way - Mark the hole positions on the frame, in line with the eyes in the fabric - Remove the pleated blind, ● drill the holes, install the screw hooks - Install the rails and the blind as shown in figure.

Removal



21-03-2014

FaceFix installation to a window frame / wall [F1]



Model

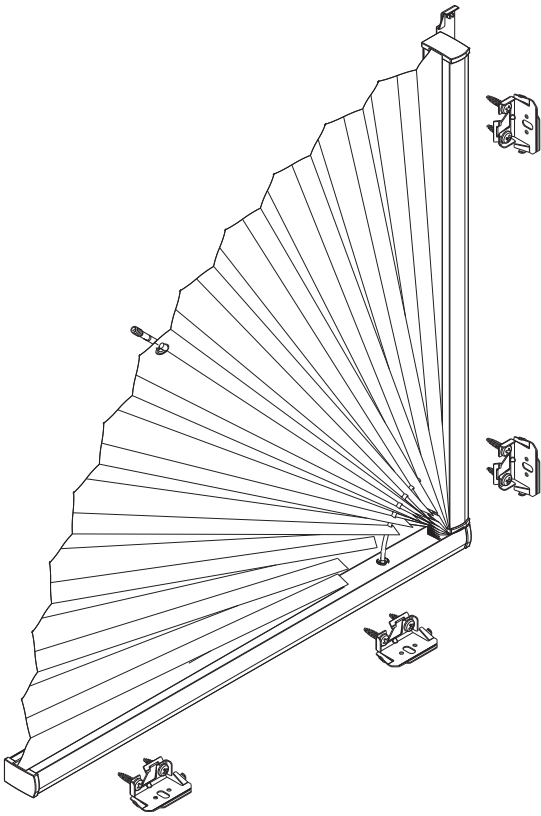
3507/57

3517/67

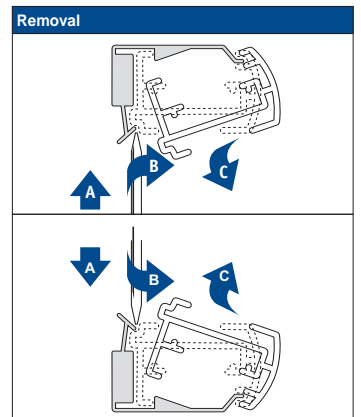
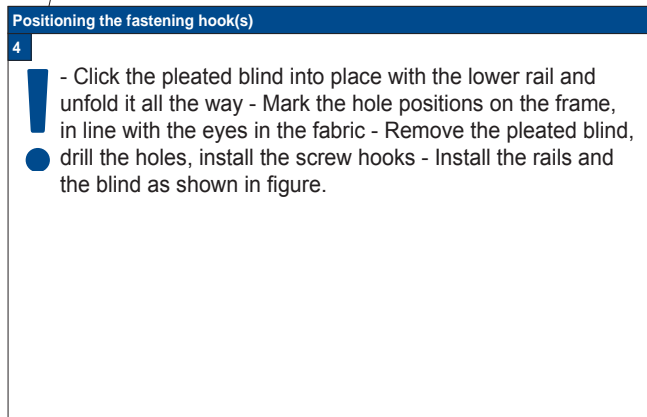
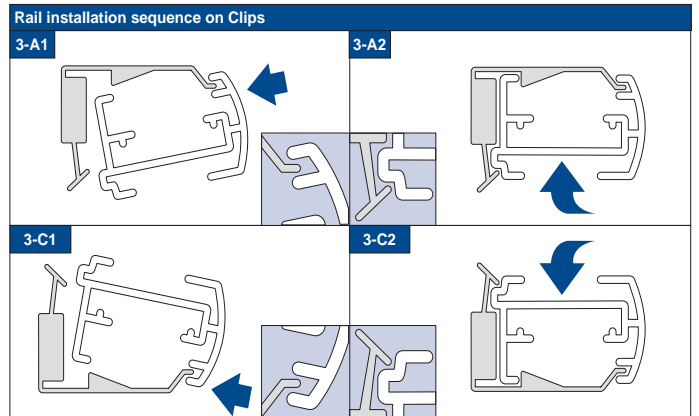
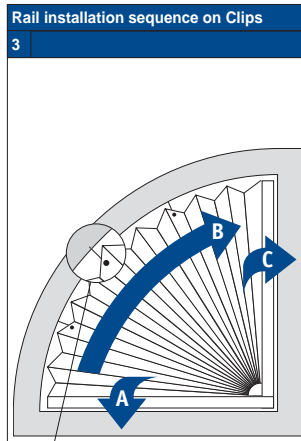
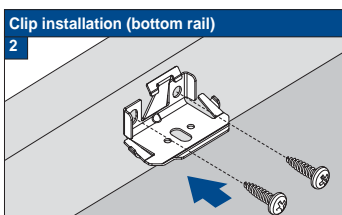
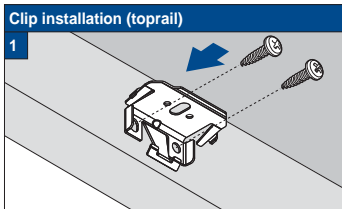
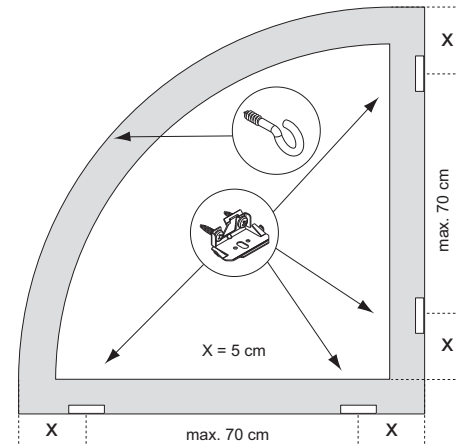
- ! Do not damage the product when using a sharp knife to open the packaging! Fitting screws: Use a size-2 screwdriver (PO-ZIDRIVE) or use an electric screwdriver at it's lowest torque.
- Rail removal: Use a flat screwdriver of max. 6 mm wide. Only

use the original screws enclosed, to prevent malfunctioning from using too thick screw heads!

Installation and User's manual PB - GB



Product width	Number of parts		
0 - 80 cm	4	var	8
81 - 120 cm	6	var	12



21-03-2014

Installation TopFix / RecessFix [R1]



Model

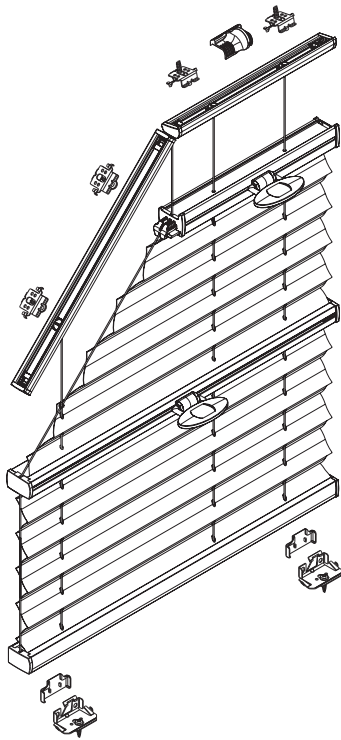
3802

3852

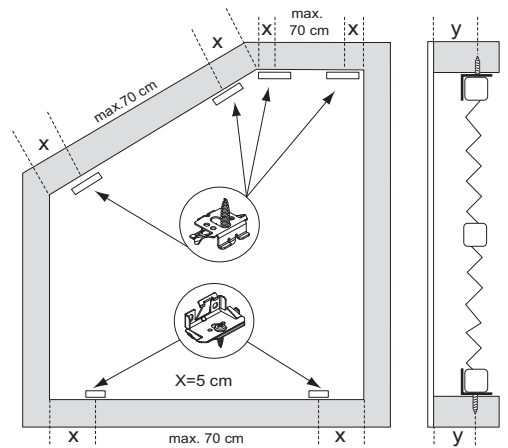
Do not damage the product when using a sharp knife to open the packaging! Fitting screws: Use a size-2 screwdriver (PO-ZIDRIVE) or use an electric screwdriver at it's lowest torque.
 Rail removal: Use a flat screwdriver of max. 6 mm wide. Only

use the original screws enclosed, to prevent malfunctioning from using too thick screw heads!

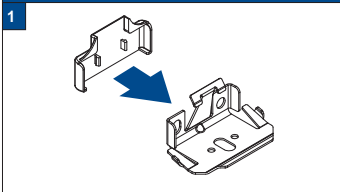
Installation and User's manual PB - GB



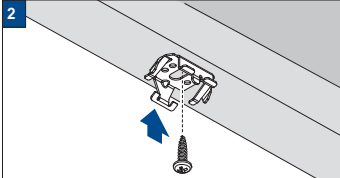
Product width	Number of parts					
0 - 80 cm	2	2	var	var	1	var
81 - 150 cm	3	3	var	var	1	var



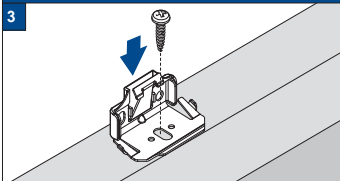
Cover installation



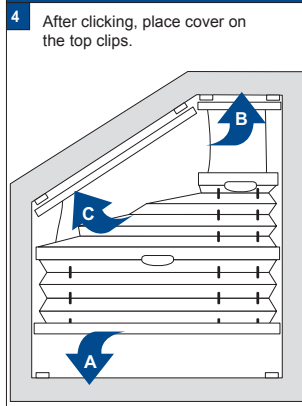
Clip installation (toprail)



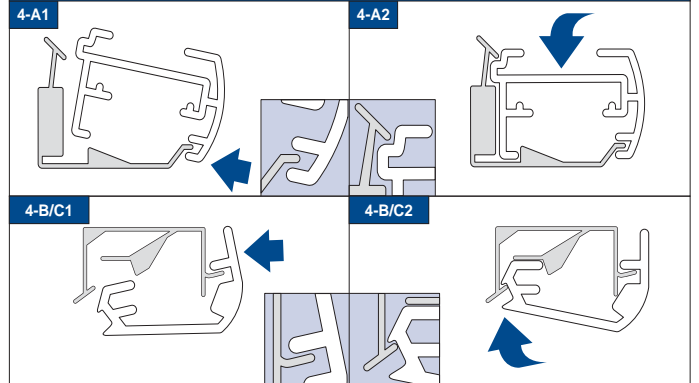
Clip installation (bottom rail)



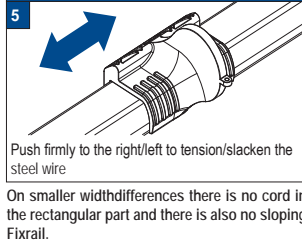
Installation sequence



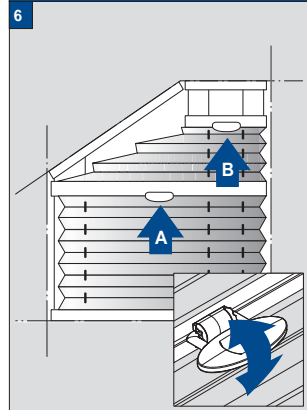
Rail installation sequence on Clips



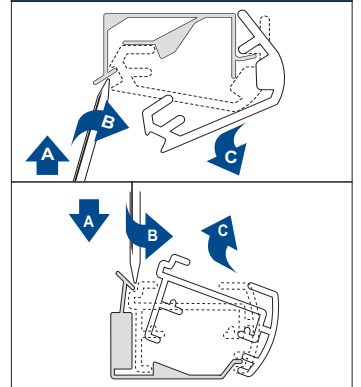
Tensioning/slackening the steel wire



Operation



Removal



21-03-2014

FaceFix installation to a window frame / wall [F1]

Luxaflex

Model

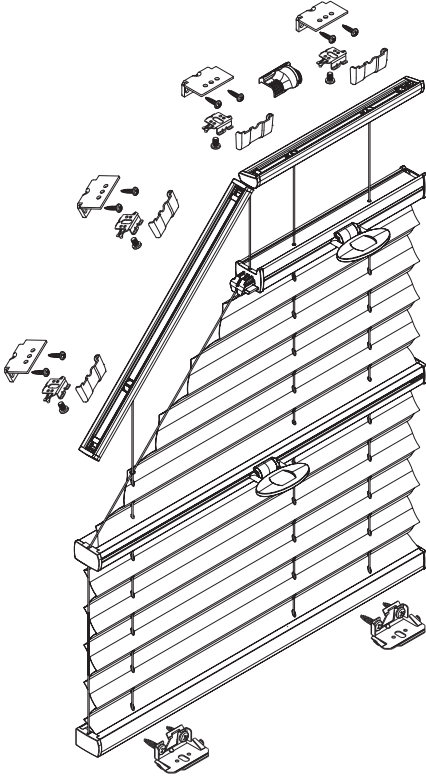
3802

3852

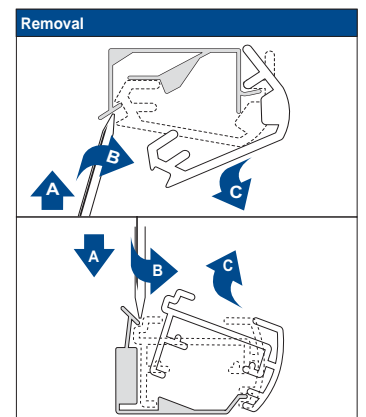
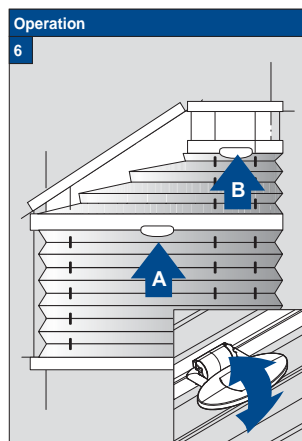
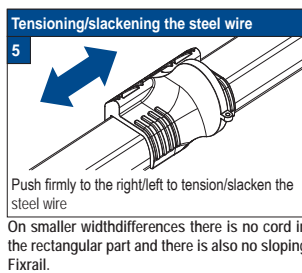
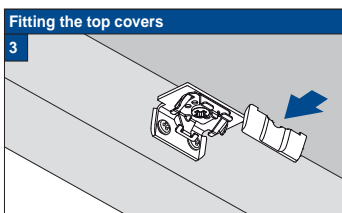
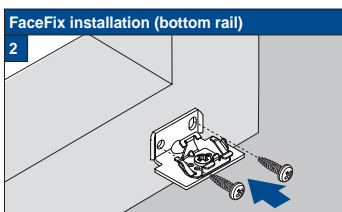
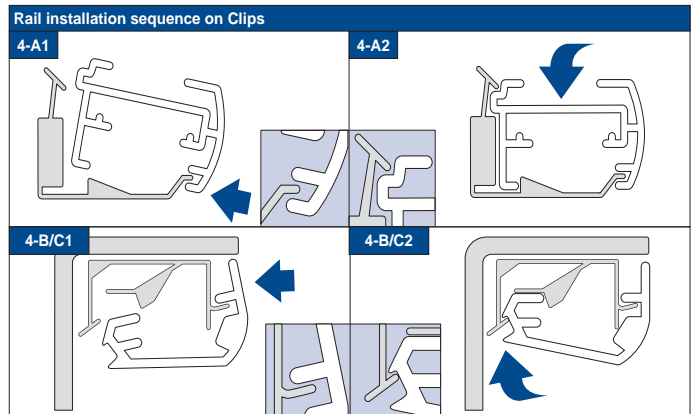
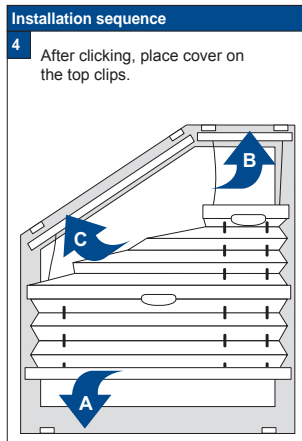
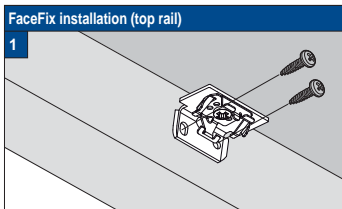
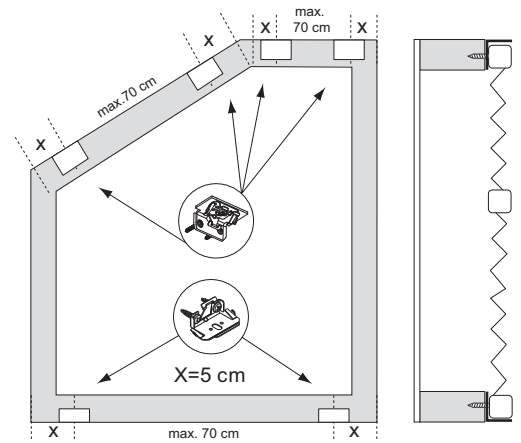
- ! Do not damage the product when using a sharp knife to open the packaging! Fitting screws: Use a size-2 screwdriver (PO-ZIDRIVE) or use an electric screwdriver at it's lowest torque.
- Rail removal: Use a flat screwdriver of max. 6 mm wide. Only

use the original screws enclosed, to prevent malfunctioning from using too thick screw heads!

Installation and User's manual PB - GB



Product width	Number of parts							
0 - 80 cm	var	var	var	var	2	1	var	var
81 - 150 cm	var	var	var	var	3	1	var	var



21-03-2014

Installation TopFix / RecessFix [R1]



Model

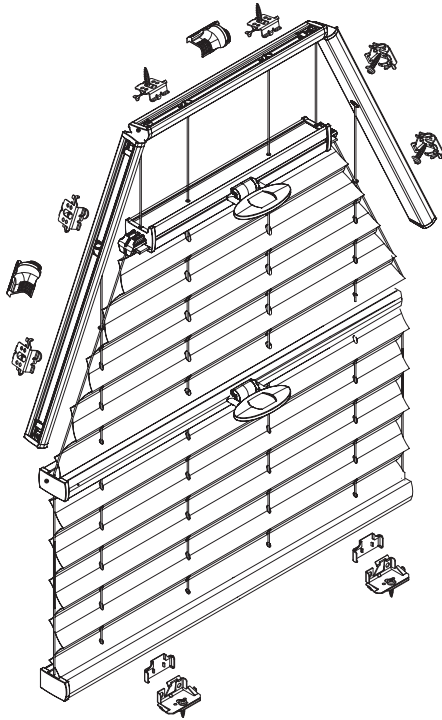
3812

3862

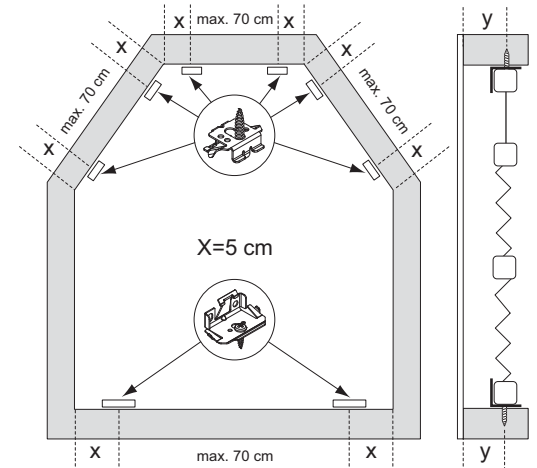
- ! Do not damage the product when using a sharp knife to open the packaging! Fitting screws: Use a size-2 screwdriver (PO-ZIDRIVE) or use an electric screwdriver at it's lowest torque.
- Rail removal: Use a flat screwdriver of max. 6 mm wide. Only

use the original screws enclosed, to prevent malfunctioning from using too thick screw heads!

Installation and User's manual PB - GB



Product width	Number of parts					
0 - 80 cm	2	2	var	var	1	var
81 - 150 cm	3	3	var	var	1	var



Cover installation

1

Clip installation (bigger rail)

2

Installation sequence

4

After clicking, place cover on the top clips.

Rail installation sequence on Clips

4-A1

4-A2

4-B/C/D1

4-B/C/D2

Clip installation (bottom rail)

3

Tensioning/slackening the steel wire

5

Push firmly to the right/left to tension/slacken the steel wire

On smaller width differences there is no cord in the rectangular part and there is also no sloping Fixrail.

Operation

6

Removal

21-03-2014

FaceFix installation to a window frame / wall [F1]

Luxaflex

Model

3812

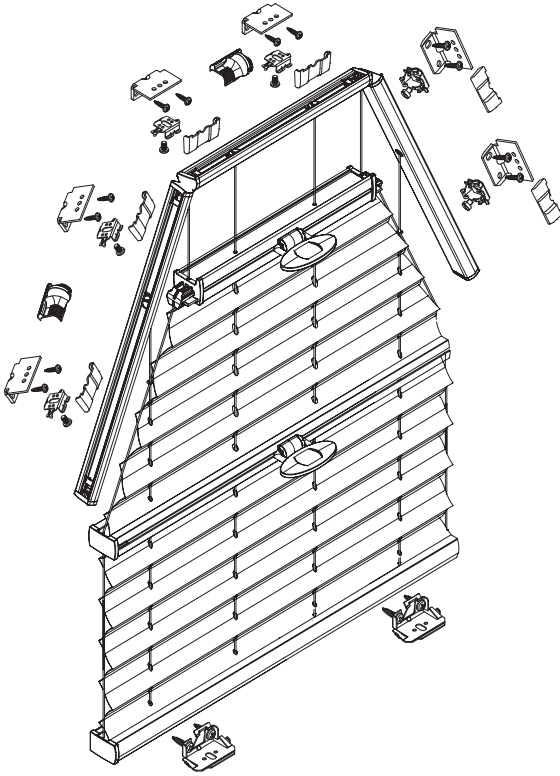
3862

Do not damage the product when using a sharp knife to open the packaging! Fitting screws: Use a size-2 screwdriver (PO-ZIDRIVE) or use an electric screwdriver at it's lowest torque.

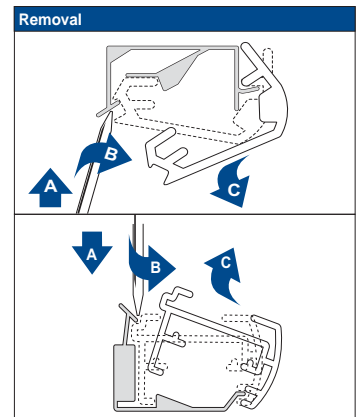
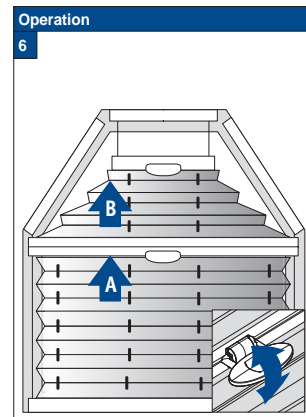
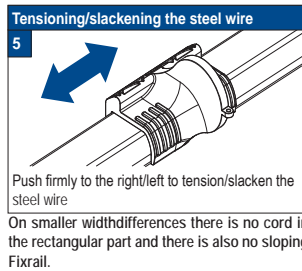
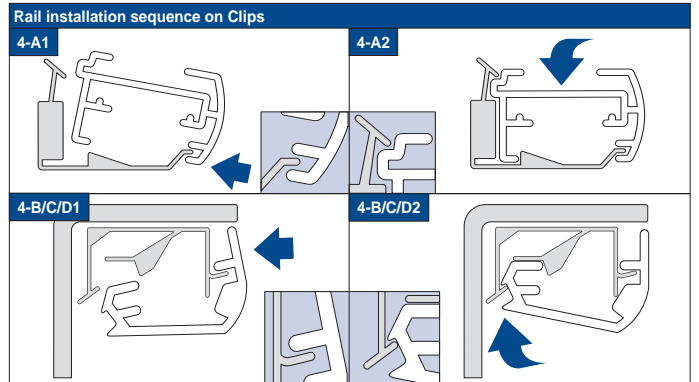
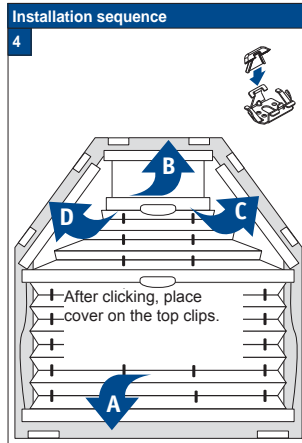
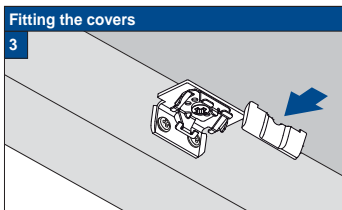
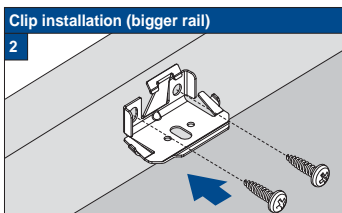
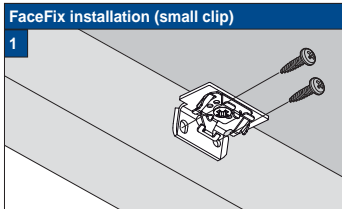
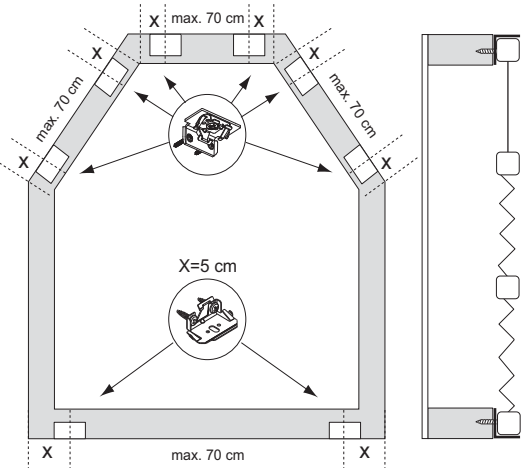
use the original screws enclosed, to prevent malfunctioning from using too thick screw heads!

Rail removal: Use a flat screwdriver of max. 6 mm wide. Only

Installation and User's manual PB - GB



Product width	Number of parts							
0 - 80 cm	var	var	var	var	2	1	var	var
81 - 150 cm	var	var	var	var	3	1	var	var



21-03-2014